

Z1 TOW RING INSTALLATION MANUAL

**PROLOGUE:**

Study these instructions completely before proceeding to assembly. The installer must have a thorough knowledge of automotive systems operation. If unfamiliar with any of the concepts outlined in this instruction, we recommend the installation be completed by a qualified professional.

WARNING!

Extreme caution should be taken when performing maintenance or performance upgrades to your vehicle. Please observe and abide by any Warning or Caution labels placed on the various components and tools used when servicing your vehicle. If you have any questions regarding installation or the various components included with the Z1 Motorsports Tow Ring, consult with a Professional Mechanic, or contact Z1 Motorsports for more information.

PARTS INCLUDED:

Item	Quantity	Description
1	1	Tow Ring
2	1	Adapter
3	1	Socket Head Screw
4	1	Tow Ring Adapter
5	1	Jam Nut

TOOLS REQUIRED:

- Assorted Metric Wrenches
- Allen/Hex Keys
- Loctite

SAFETY REQUIREMENTS:

- Always wear safety glasses and any necessary protective garments. If using any fluids, chemicals, or solvents, a respirator is recommended.
- Always turn the ignition to the OFF position and disconnect the NEGATIVE battery terminal.
- Always use properly rated jack stands when working under your vehicle.
- Always keep limbs and parts away from moving drivetrain parts.
- Only operate drivetrain in safe space and well-ventilated areas.

BEFORE YOU BEGIN:

Remove contents from the Z1 Motorsports Tow Ring and verify that ALL necessary hardware is present.

PROCEDURE:

1. Locate the Tow Ring and Adapter. Place the Adapter into the opening of the Tow Ring. *Figure 1.*

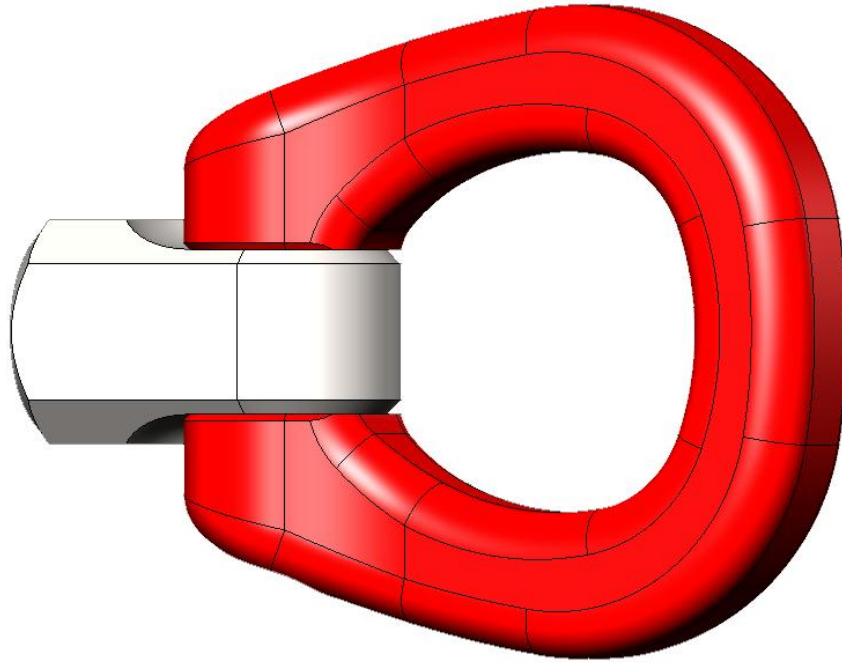


Figure 1

2. Locate the Socket Head Screw. Apply Loctite to the threads of the screw.
3. Install the Screw into the Tow Ring and Adapter. Tighten the Screw with a Hex Key. *Figure 2.*

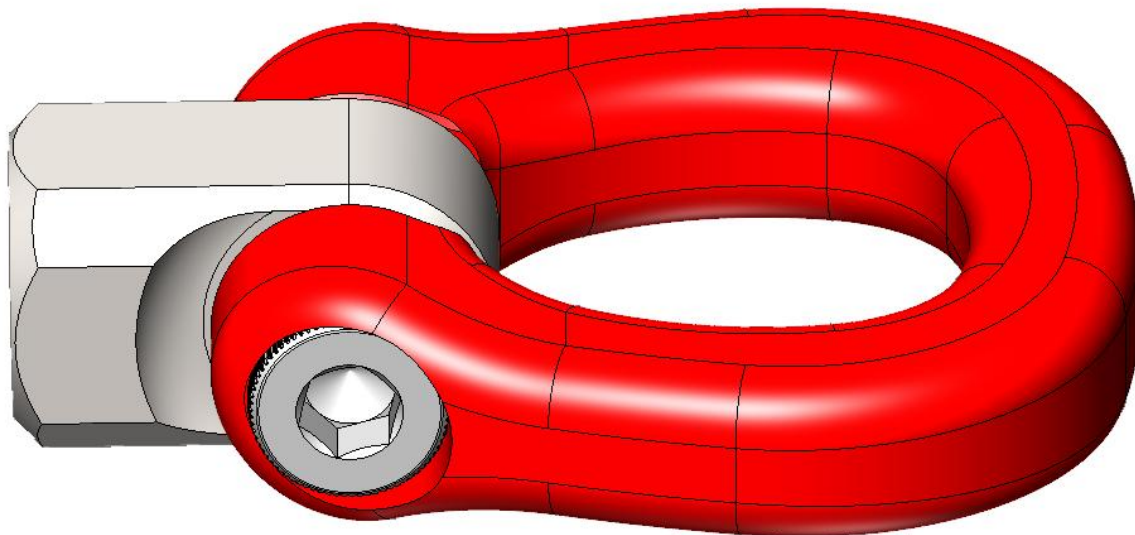


Figure 2

4. Refer to the Installation Manual for your vehicle specific Tow Ring Adapter to install it into the vehicle.
5. Thread the Tow Ring onto the Adapter and tighten the Jam Nut against it to lock the Tow Ring in place.
Figure 3.

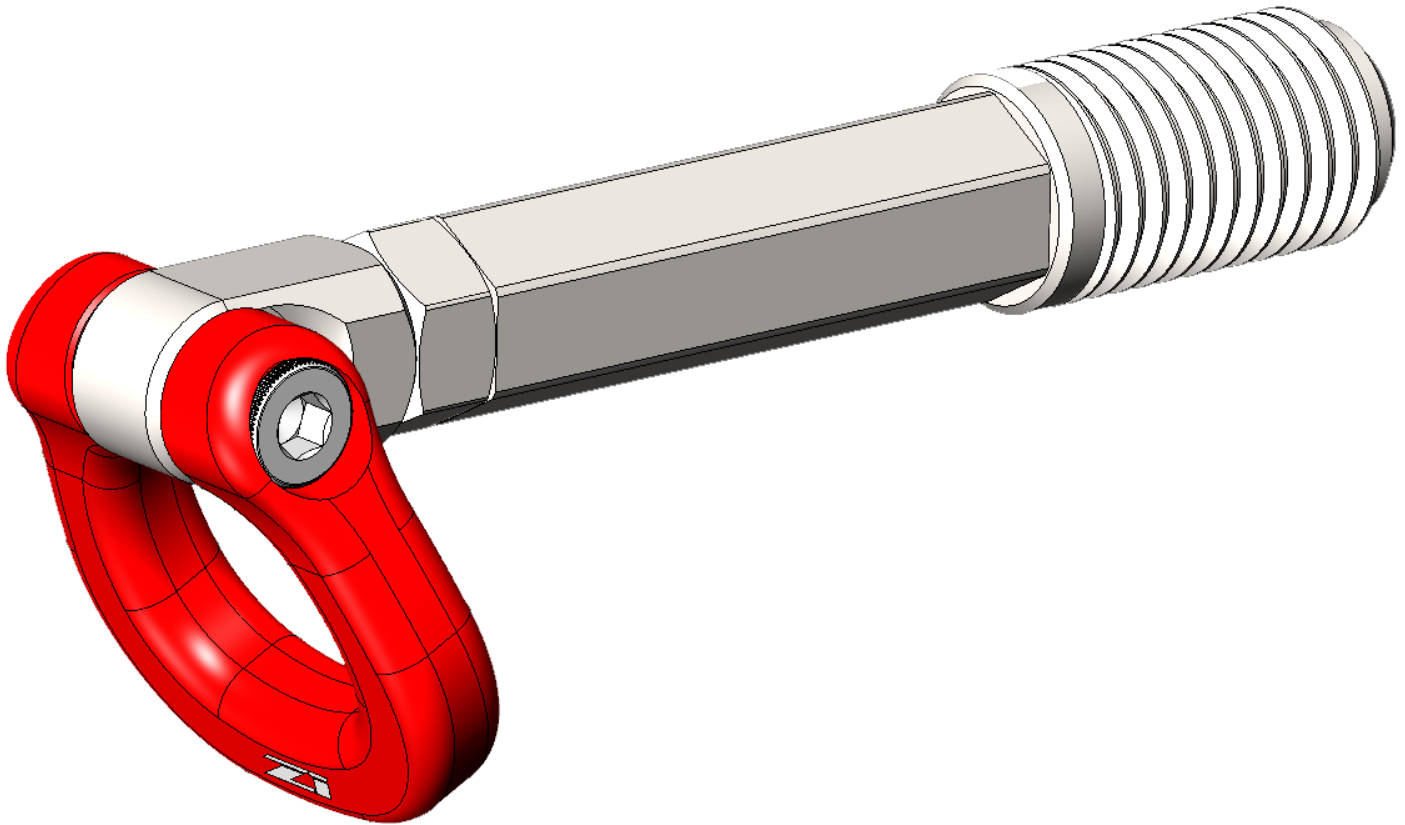


Figure 3

END

Additional Technical Support:
Contact Z1 Motorsports at info@z1motorsports.com
Or call 770-838-7777 between 9am and 6pm ET